



Plant Products
2022





P.O. Box 1117 - MOOSE JAW, SK - S6H 4P8
luke@metromfg.ca
(306) 694-4099

A decorative graphic consisting of four horizontal lines in red, orange, and yellow, positioned to the left of the "CONTENTS" header.

CONTENTS

Batch Plant	03
Casting Bed	04
1014 Form	05
1025 Form	06
Magnet	07
MRT (Magnet realese tool)	08
EPS JIG TABLE	09
FORM CART	10
Panel Cart	11
ALU-FORM SYSTEM	12

Batch Plant

TECHNICAL FEATURES

The Metro Batch Plant takes a different approach to the way batching is done. Automation and workflow are heavily on our minds throughout the design process. The batch plant features a modular design that allows Metro to integrate automation as future developments are made. This batch plant uses hoppers with integrated mixer allowing us to stage hoppers that are mixing for the proper amount of time while another one is pouring. The large Silos have built in super sac unloaders.

HOPPER

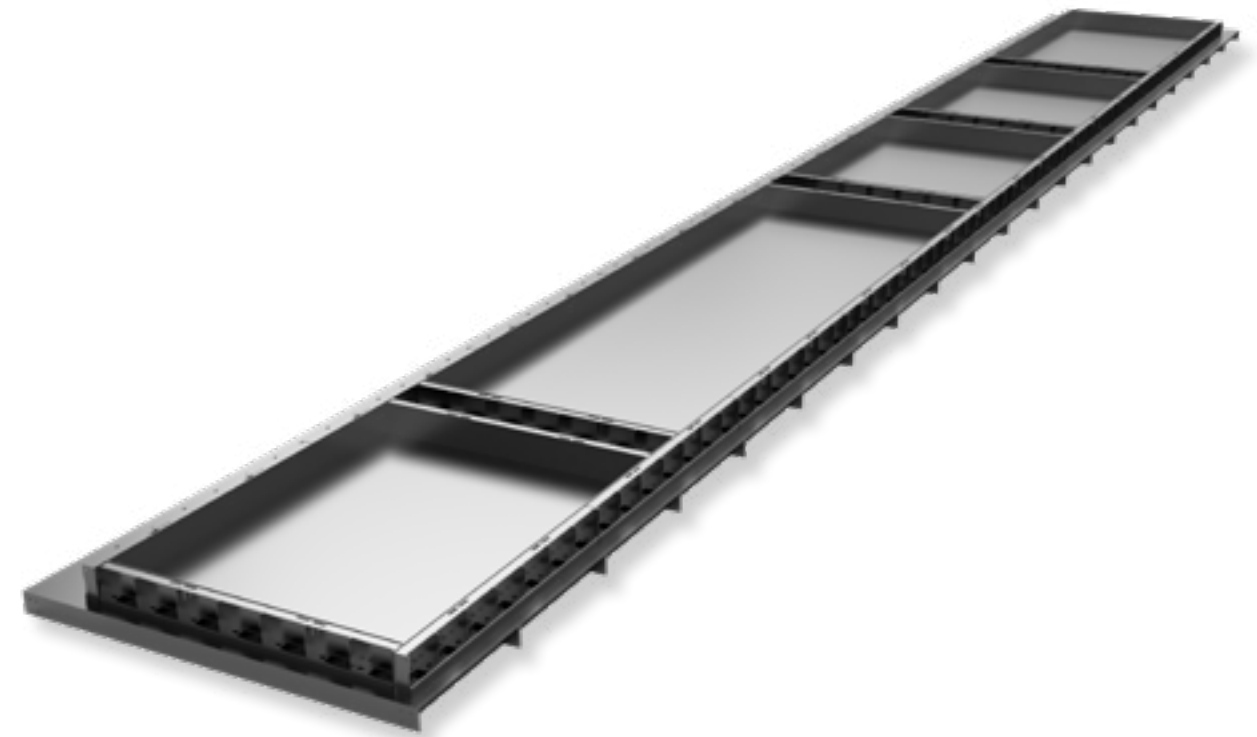
Product Code

SPECIFICATIONS:

- Material:
- Dimensions (HxWxL):
- Product Weight:



CASTING BED



TECHNICAL FEATURES

Casting beds are constructed and designed with many aspects in mind, from shipping to manufacturing. The casting bed is made in sections which make shipping a breeze and is welded onsite then ground flat creating a fully seamless bed. The casting bed is constructed with a heavy-duty sub structure that has a 3/8 thick pickled and oiled top face. Overall flatness is the most important part of a casting bed, and it is our mandate to produce and install a bed that meets those requirements. Leveling feet that are anchored to the ground located every 5' resulting in a well-supported coasting bed that has the adjustability down the road for removal or could be releveled if the floor were heave over time.

CASTING BED

Product Code

SPECIFICATIONS:

Material: Pickled and Oiled (Top plate)

Dimensions (HxWxL): 120'x13.5'x1'

Flatness over 10': ± 1/16"

Weight: 48,000 LBS

1014 FORM

1014 FORM

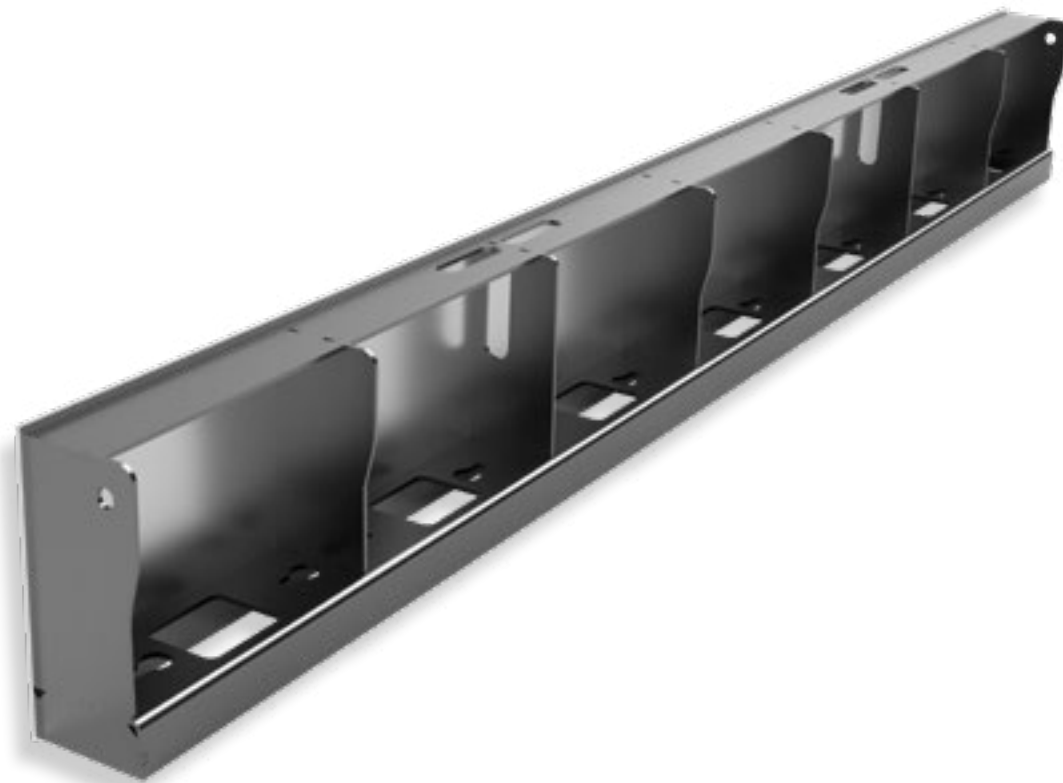
Product Code

SPECIFICATIONS:

- Material: Steel
- Dimensions (HxWxL): 14" x 6" x 120"
- Flatness over 10': ± 1/32"
- Product Weight: 236lbs

TECHNICAL FEATURES

1014 Forms have been designed specifically for Nexii. The Form has key hole slots for Metro Magnets that securely attach the form to the casting bed. Forms are manufactured using stretched and leveled 1/4" 44w plate that has been laser cut to size. Unlike others, Metro Forms can be laid down flat allowing the face of the form to be parallel to the bottom surface enabling multiple forms to be cleaned at once. Forms are required to sit square to the casting bed and can have a flatness tolerance of 1/16" over the 10' length. Metro focuses on producing quality forms, which in turn produces better quality panels.



1025 FORM



TECHNICAL FEATURES

1025 Forms have been designed specifically for Nexii as the big brother to the 1014 Form. Generally used for roof panels and floor panels. The Form has key hole slots for Metro Magnets that securely attach the form to the casting bed. Forms are manufactured using stretched and leveled 1/4" 44w plate that has been laser cut to size. Unlike others, Metro Forms can be laid down flat allowing the face of the form to be parallel to the bottom surface enabling multiple forms to be cleaned at once. Forms are required to sit square to the casting bed and can have a flatness tolerance of 1/16" over the 10' length. Metro focuses on producing quality forms, which in turn produces better quality panels.

1025 FORM Product Code

SPECIFICATIONS:

- Material: Steel
- Dimensions (HxWxL): 25" x 6" x 120"
- Flatness over 10': ± 1/16"
- Product Weight: 389lbs

MAGNET

MAGNET

Product Code

SPECIFICATIONS:

- Material: Steel
- Dimensions (HxWxL): 2.375"x4.7"x12.5"
- Product Weight: 15lbs

TECHNICAL FEATURES

The Metro Magnet has been designed with strength, efficiency and safety in mind. Constructed with rare earth magnets each assembly is rated at 2600kg, allowing a standard 10' form to be held down with 18,200kg of force. The custom plunger has been designed to work with the Metro Magnet Release Tool, enabling the user to release the magnet with the press of a button.



MAGNET RELEASE TOOL



TECHNICAL FEATURES

The Metro Magnet Release Tool has been designed to eliminate the need for manual force when releasing magnets. The unique jaw geometry allows for the magnet's plunger to be actuated smoothly and safely. The compact design of the tool also allows magnets to be placed closer to walls or other formwork, maximizing bed efficiency.

MAGNET PRY BAR

Product Code

SPECIFICATIONS:

Material: ·Hardened Steel

EPS JIG TABLE



TECHNICAL FEATURES

EPS Jig tables are used in Nexii plants to facilitate the production of EPS rough stock. The EPS blocks must be securely held in place while the glue sets. The Metro EPS Jig table uses a keyhole pattern offset on a 45 degree angle allowing the clamps to be placed in either direction. The "fences" are made using 1014 forms allowing for quick tear down and different job setups.

Includes:
 (4) 1014 forms
 (4) Pneumatic Keyhole Clamps

EPS JIG TABLE

Product Code

SPECIFICATIONS:

- Material: Steel
- Dimensions (HxWxL) 3'x14.8'x45'
- Flatness over 10': ± 1/16"
- Product Weight: 10,000 LBS

FORM CART

VERTICAL CART

Product Code

SPECIFICATIONS:

- Material: Steel
- Dimensions (HxWxL): 3.3'x5.5'x8'
- Product Weight: 609lbs

TECHNICAL FEATURES

Form Carts are used to safely store, transport, organize the forms in the plant. The Form Carts hold 6 1014 or 1025 forms at a time and can be stacked on top of one another (max 2). When forms aren't in use it is important they are stored in a manner that won't allow for them to be tipped over. Form Carts are designed to be modular as well, so that the uprights that hold the forms can be removed and it can be used as a standard horizontal cart.



PANEL CART



TECHNICAL FEATURES

Flat Carts are used for panels to be transported through the plant. The Carts can be coupled together to increase the footprint for when you have those extra large panels. Includes four heavy-duty casters.



FLAT CART

Product Code

SPECIFICATIONS:

Material: -Steel

Dimensions (HxWxL): -10"x8'x10'

Product Weight: -453lbs

ALU-FORM SYSTEM

ALU-FORM System

INCLUDES

- 20' 2x3 Orange Extrusion - QTY 24
- Magnet - QTY 48
- Form Clamp - QTY 48

TECHNICAL FEATURES

Aluminum Forms are used for single side casting. These Forms are powder coated Safety Orange and can come 20' lengths or can be cut down to the desired length based on the project



www.METROMFG.ca